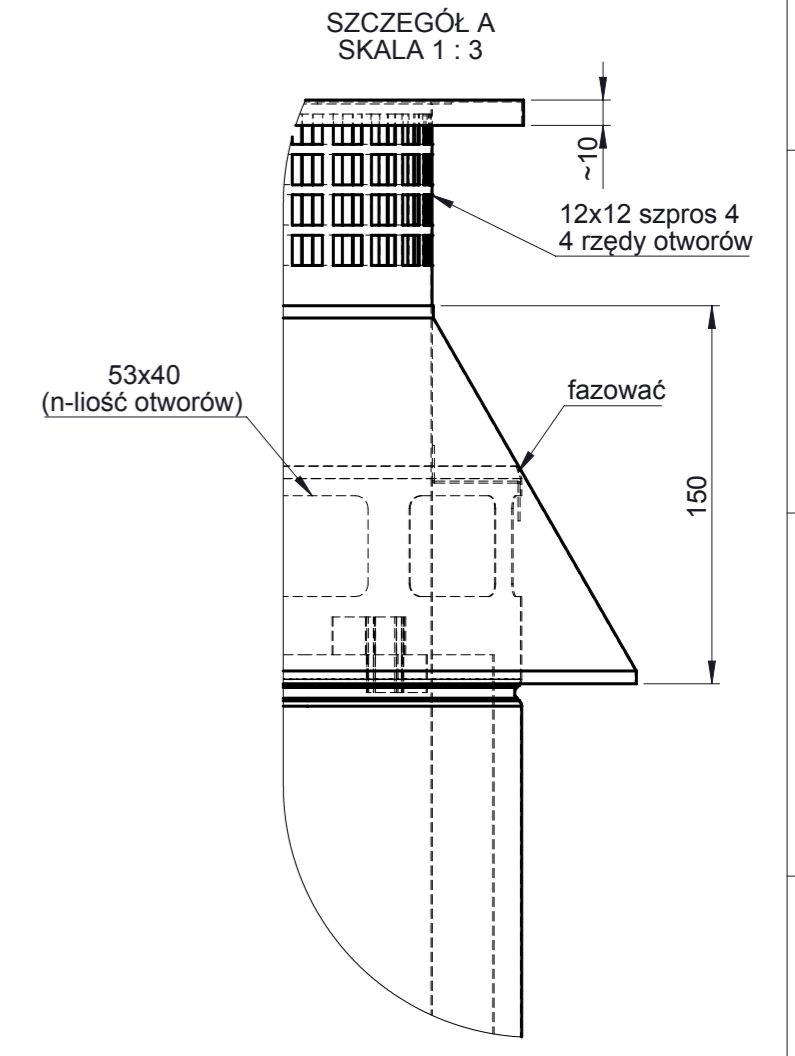
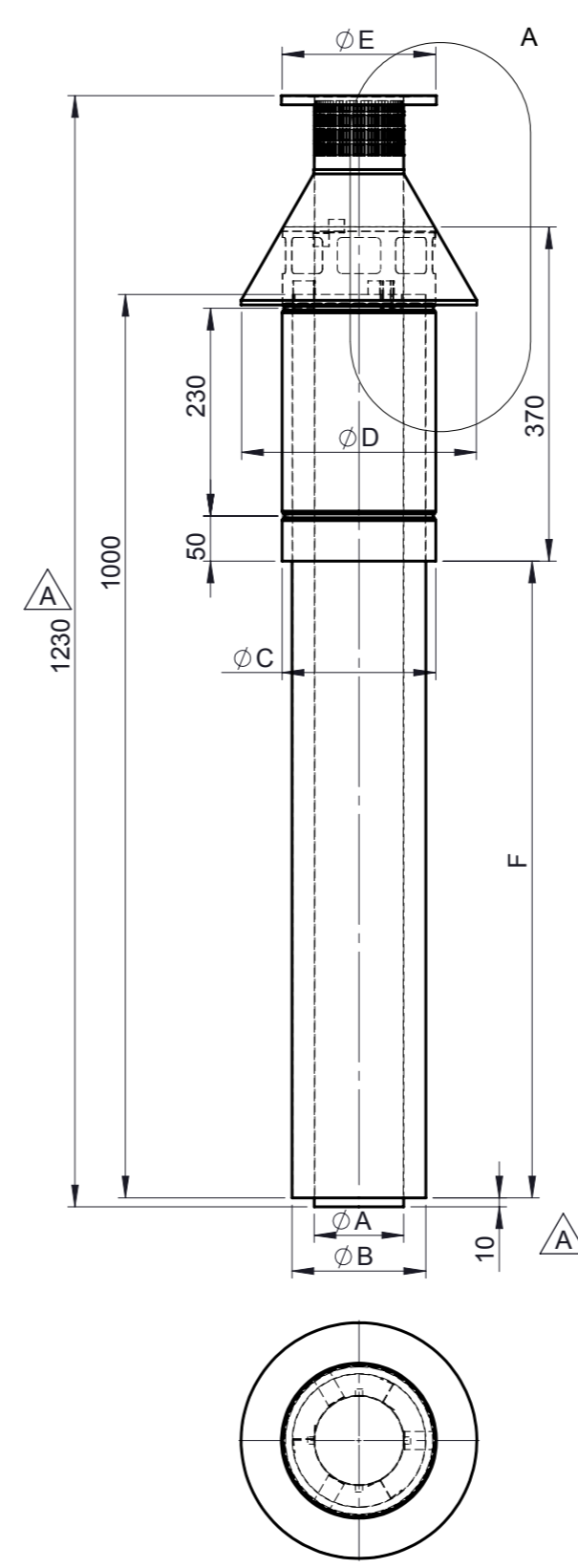
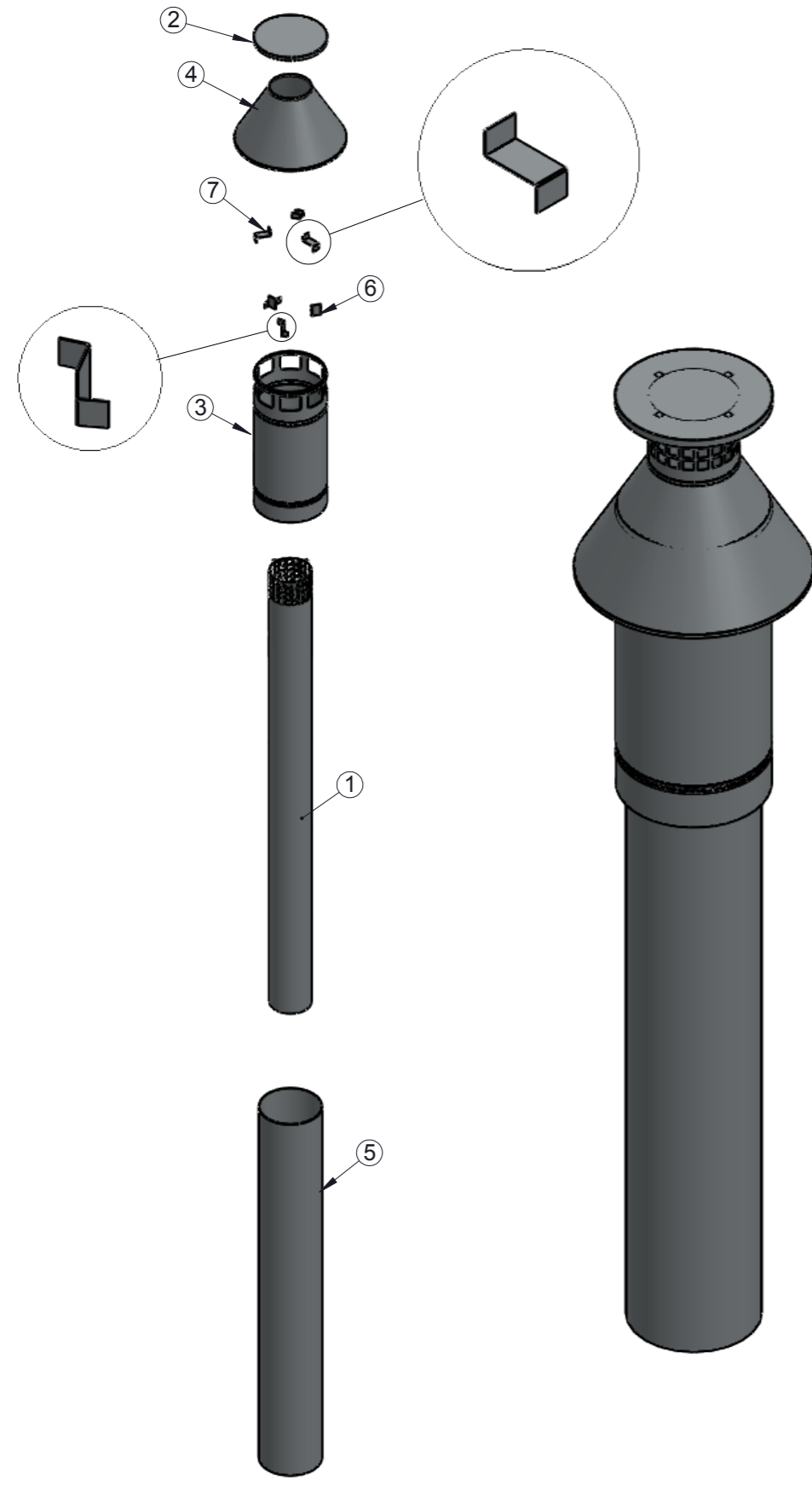


TABLE OF CORRECTIONS (LAST FIVE)					
REVISION	CORRECTION	WZT NO	DESCRIPTION	DATE	NAME
01	A	51/2017	Wydłużenie płaszcza DWI o 10 mm.	2017-06-08	MSA



$\phi$	100/150	130/200
A	99	129
$\phi A$	310	405
B	148	198
$\phi B$	465	622
C	170	220
D	260	290
E	200	230
F	~705	~688
n	8	11

7	dystans 2		1.4301 IIID	0,8	3
6	dystans 1		1.4301 IIID	0,8	3
5	DWA rura_2		1.4301 IIID	0,5	1
4	konus		1.4301 IIID	0,5	1
3	DWA rura_1		1.4301 IIID	0,5	1
2	dekiel		1.4301 IIID	0,8	1
1	DWI rura cz1		1.4301 IIID	0,5	1
NO	NAME / DIN	NAV	MATERIAL	THICKNESS	QTY

**Jeremias**  
CHIMNEY SYSTEMS

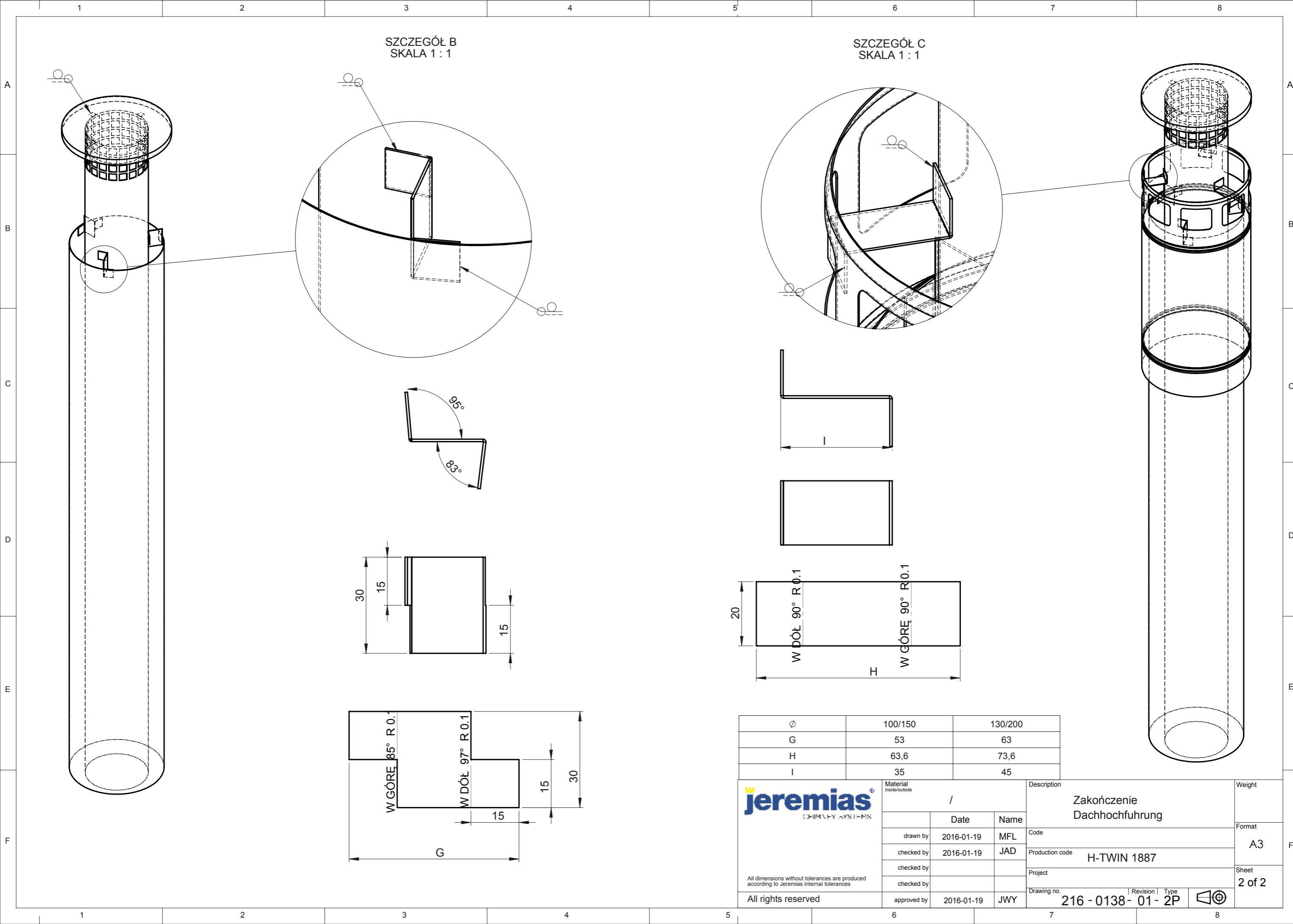
Material: /  
Description: Zakończenie Dachhochführung  
Weight: /  
Format: A3  
Code: /  
Production code: H-TWIN 1887  
Project: /  
Drawing no.: 216 - 0138 - 01 - 2P  
Revision: /  
Type: /  
Date: 2016-01-19  
Name: MFL  
checked by: JAD  
checked by: /  
checked by: /  
approved by: JWY

All dimensions without tolerances are produced according to Jeremias internal tolerances  
All rights reserved

Sheet 1 of 2

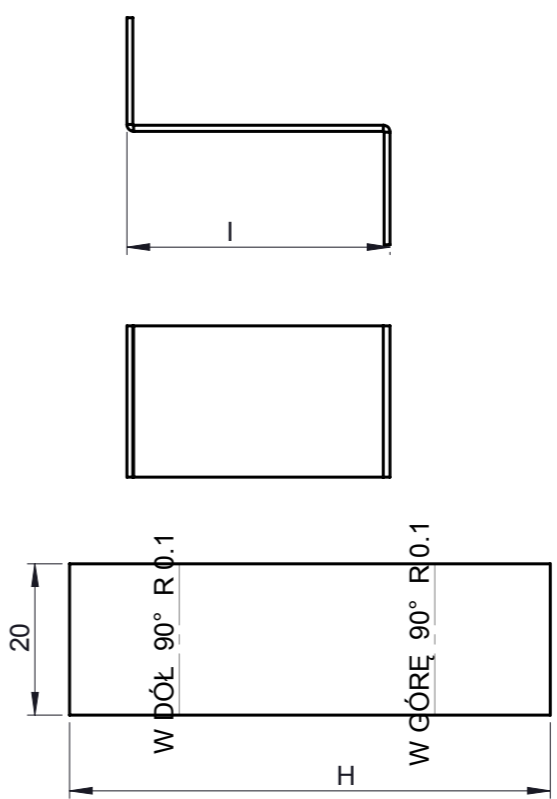
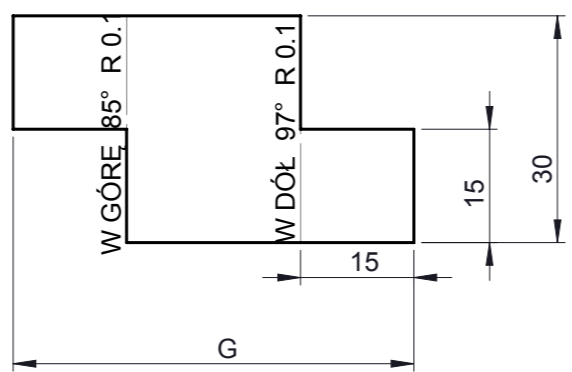
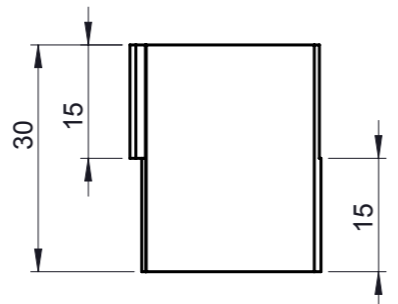
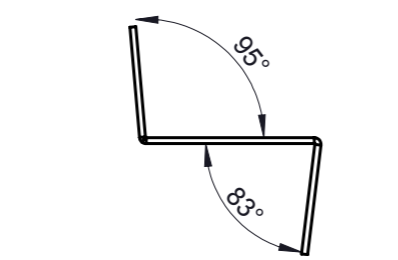
© Jeremias GmbH. All rights reserved, also regarding any disposal, exploitation, distribution, as well as in the event of applications for industrial property rights.

© Jeremias GmbH. All rights reserved, also regarding any disposal, exploitation, distribution, as well as in the event of applications for industrial property rights.



SZCZEGÓŁ B  
SKALA 1 : 1

SZCZEGÓŁ C  
SKALA 1 : 1



Ø	100/150	130/200
G	53	63
H	63,6	73,6
I	35	45

<p>All dimensions without tolerances are produced according to Jeremias internal tolerances</p> <p>All rights reserved</p>	Material inside/outside		Description <b>Zakończenie Dachhochführung</b>	Weight		
	/				Code Production code <b>H-TWIN 1887</b>	
	drawn by	Date				Name
	checked by	2016-01-19				MFL
	checked by	2016-01-19				JAD
checked by			Project	Sheet <b>2 of 2</b>		
approved by	2016-01-19	JWY	Drawing no. <b>216 - 0138 - 01 - 2P</b>			

